



GRUPPO SPORTIVO PAVIONE A.S.D.
Via Nazionale, 56/A
38050 IMER (TN)
Tel. 0439 1998468
info@gspavione.it; gspavione@pec.it
www.gspavione.it
C.F. 81006100226 - P.I. 01373560224 – S.I.D.: 0000000
Iban: IT94P0814034890000027111373



Bulletin 1 version 8, live results and GPS



Bulletin 2

This Bulletin 2 adds more information to Bulletin 1 – V8

Fences for animal

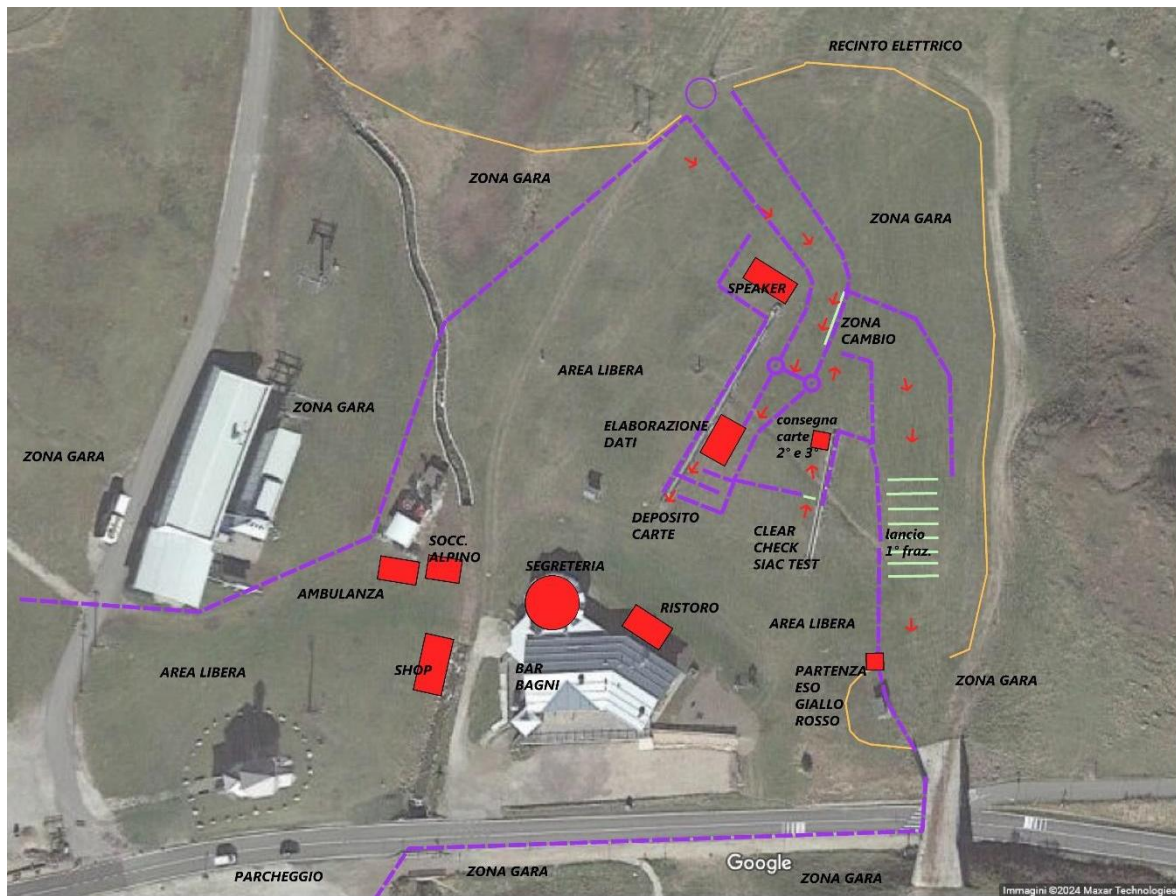
In the competition area there are a lot of fences for the animals (cows and horses) with single or double wires: some of them have **ELECTRICITY**. There are some open passages of the fence that will be NOT marked on the map: in any case it will be possible to jump these fences. Please be careful not to break the fences, respect the animals and don't leave the gaps open, where not manned.



GRUPPO SPORTIVO PAVIONE A.S.D.
Via Nazionale, 56/A
38050 IMER (TN)
Tel. 0439 1998468
info@gspavione.it; gspavione@pec.it
www.gspavione.it
C.F. 81006100226 - P.I. 01373560224 – S.I.D.: 0000000
Iban: IT94P0814034890000027111373



21 September – RELAY Race



Prohibited road

As shown on the map, a prohibited road will be drawn with the official symbol (ISOM 711, purple X): it will be not allowed to run along this road (it is not possible to run on the asphalt). The runners can cross this road only using the bridge drawn on the map. Some marshals will be present along the road. It is not possible to run directly on the road asphalt, but it will be allowed to run along the fields and parking places close to it.

Map scale

All classes (Esordienti, Yellow and Red course too) for Saturday's race will use 1:10.000 scale.



GRUPPO SPORTIVO PAVIONE A.S.D.
Via Nazionale, 56/A
38050 IMER (TN)
Tel. 0439 1998468
info@gspavione.it; gspavione@pec.it
www.gspavione.it
C.F. 81006100226 - P.I. 01373560224 – S.I.D.: 0000000
Iban: IT94P0814034890000027111373



Start time for individual classes

The classes Esordienti, Yellow and Red (individual classes) will start from 14:30 with free start, in the arena.

Delayed start

From the mass start / change over area to the delayed start control the runners must run on the 210m marked corridor. It is mandatory to pass by the start flag.

Pre-warning

During the race, there is an arena passage/spectator control, visible from the change/finish. From this control to the finish, competitors will run a part of their course, according to the table below. Times are approximative!

Please be careful to wait in time for your teammates!

CLASS	Part of the course missing from the spectator control	Minutes left after the arena passage
W-13	40%	10'
W-17	60%	10'
W-20	20%	5'
W35	20%	5'
W45	60%	15'
W55	55%	15'
W65	65%	15'
W Elite	25%	5'
WAK	40%	10'
M-13	40%	10'
M-17	55%	10'
M-20	25%	5'
M35	25%	5'
M45	25%	5'
M55	20%	5'
M65	60%	15'
M Elite	20%	5'
MAK	25%	5'
OPEN	55%	15'

Competitors are required not to enter the change zone too early. Entering the change area, the competitors will clear and check their SI-Card and, within the area, the organizers will hand them the competition maps rolled up and closed with a rubber band: the competitor must check on the label that the map delivered is correct.



GRUPPO SPORTIVO PAVIONE A.S.D.

Via Nazionale, 56/A
38050 IMER (TN)
Tel. 0439 1998468
info@gspavione.it; gspavione@pec.it
www.gspavione.it
C.F. 81006100226 - P.I. 01373560224 – S.I.D.: 0000000
Iban: IT94P0814034890000027111373



When your teammate is approaching the control 100, the competitor who will start can approach the change fence and, just before receiving the touch, can remove the rubber band by throwing it into the appropriate containers.

Finish line

In case of a final sprint, the first runner to cross the finish line will be classified first.

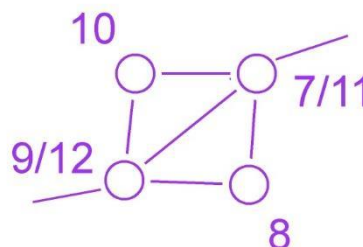
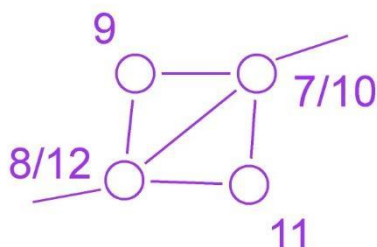
22 september – LONG race

Enlargement

For the classes M-W 20 and M-W Elite an enlargement of the map of a really detailed area will be printed on the back side of the maps in 1:10000 scale.

ELITE classes: map and phi-loop

The M-W Elite classes will have at the 3/5 of the race a phi-loop drawn as in the sample below:



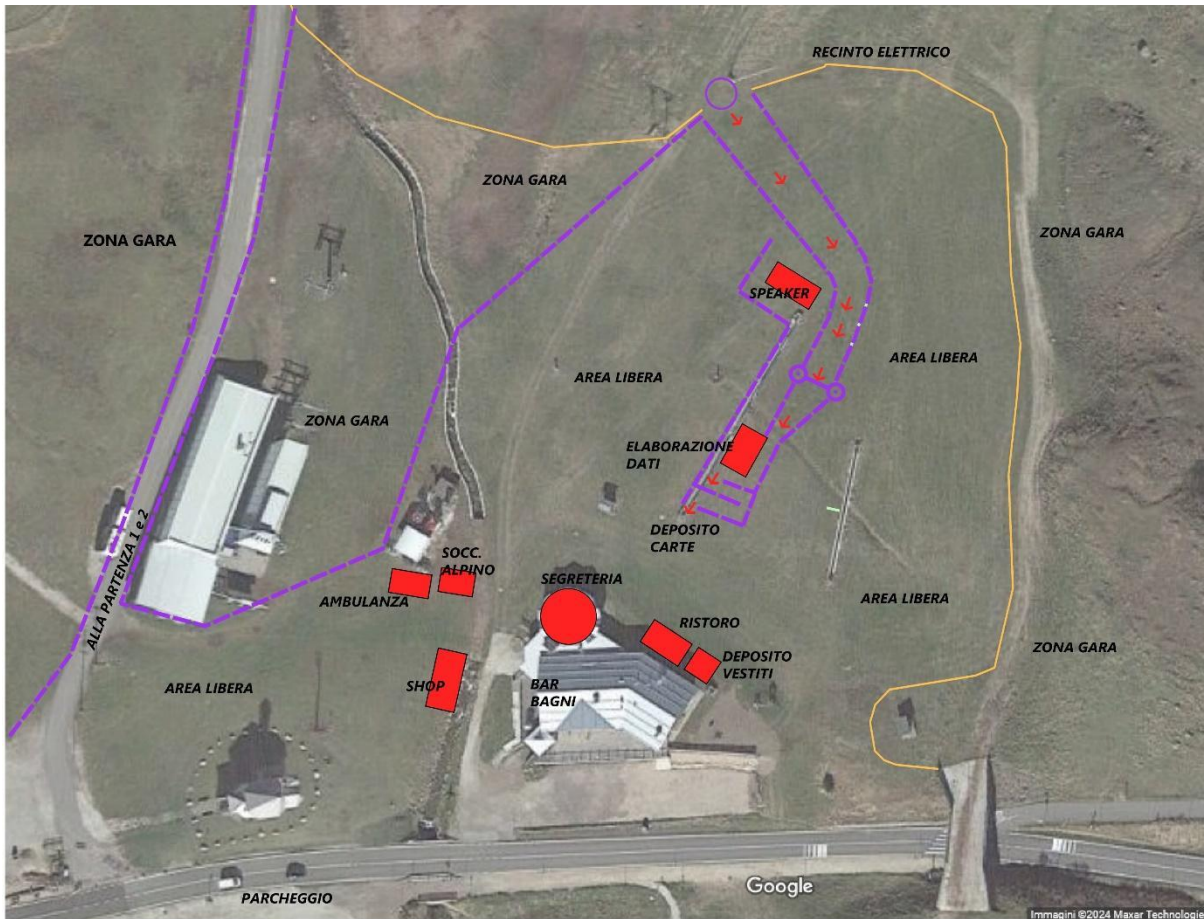
Please be careful with the order of the control point to punch!

At the start, at minute -2, the athlete will be given a personalized controls description. Please check that the name and the number written on the label (on the controls description and on the map, too) is correct.



GRUPPO SPORTIVO PAVIONE A.S.D.

Via Nazionale, 56/A
38050 IMER (TN)
Tel. 0439 1998468
info@gspavione.it; gspavione@pec.it
www.gspavione.it
C.F. 81006100226 - P.I. 01373560224 – S.I.D.: 0000000
Iban: IT94P0814034890000027111373



Refreshment

The longer courses (start 2) will find two refreshments in the competition (not on the controls point but along the route) with water: according to the different courses, these refreshment point will be on 1/3 and/or on half and/or 2/3 of the race. For the Elite classes it will be possible to have one more refreshment on the last control, only with personal bottle.

Marked section

For the categories “Esordienti – W10 – M10 – Yellow - W12 - M12” two marked sections will be present: the athletes can follow the small Italian flags on the ground and the white and red stripes.

GPS

11 athletes of M Elite and 8 athletes of W Elite will be wearing GPS during the individual race. Runners who need a GPS vest, can take one from the race office on Sunday morning. The GPS units will be available directly at the start a few minutes before the start time.

Kirchlechner Christine	SportKlub Meran
De Nardis Caterina	Pol. Masi
Dallera Caterina	PWT Italia
Taufer Francesca	US Primiero



GRUPPO SPORTIVO PAVIONE A.S.D.

Via Nazionale, 56/A
38050 IMER (TN)
Tel. 0439 1998468
info@gspavione.it; gspavione@pec.it
www.gspavione.it
C.F. 81006100226 - P.I. 01373560224 – S.I.D.: 0000000
Iban: IT94P0814034890000027111373



De Biasi Maddalena	Or. Tarzo
Lucchetta Jessica	PWT Italia
Pradel Anna	US Primiero
Pezzati Elena	Fonzaso
Mamleev Mikhail	SV Mölten Raiffeisen
Caraglio Michele	Oricuneo
Dallavalle Roberto	Gronlait Or. Team
Tenani Alessio	Pol. Masi
Tait Samuele	Gronlait Or. Team
Zagonel Giacomo	Pol. Masi
Aurebekk Marius	Kristiansand OK
Storhov Oskar Spets	OK Linnè
Debertolis Mattia	PWT Italia
Mariani Francesco	Pol. Masi
Sebastian Inderst	PWT Italia

Livelox

At the end of the individual race it will be possible to upload the race track on the Livelox using the QR code on the map.

Clothes transport

Only for the “start 2” a clothes transport service will be organized from the place where the WC are located to the finish: please use the nylon bag s marked with number bibs.

Giuria di gara (per entrambi i giorni di gara)

Membri effettivi

GATTI Giorgio Ernesto	Pol. Punto Nord
RINALDI Andrea	Trent-O
BENINI Ivano	Pol. Besanese

Membri supplenti

NARDI Mauro	Semiperdo Or. Maniago
TENANI Alessio	Pol. Masi